

MANUAL TYPE

UFO-M2 Model

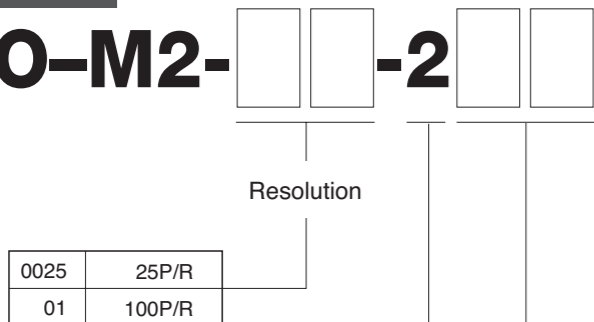


Compact & Very Thin

- Optical Slot Mode.
- Click Mechanism.

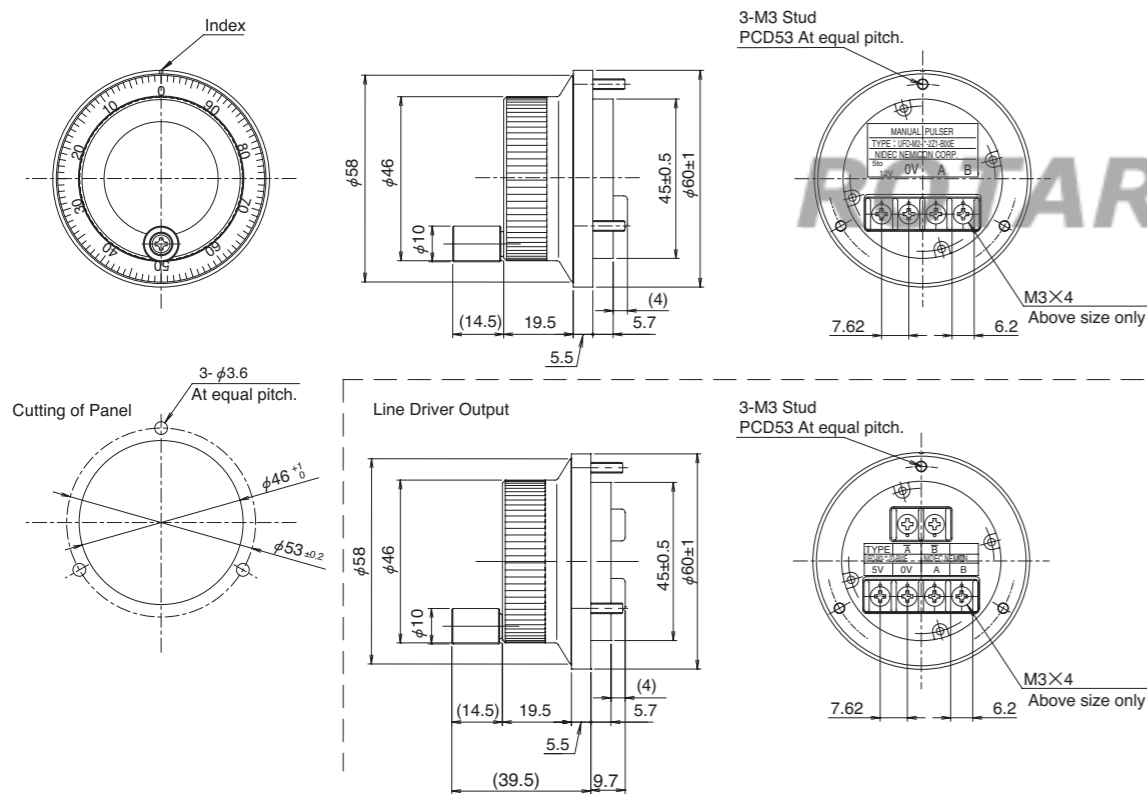


Model UFO-M2- [] -2 [] -B00E

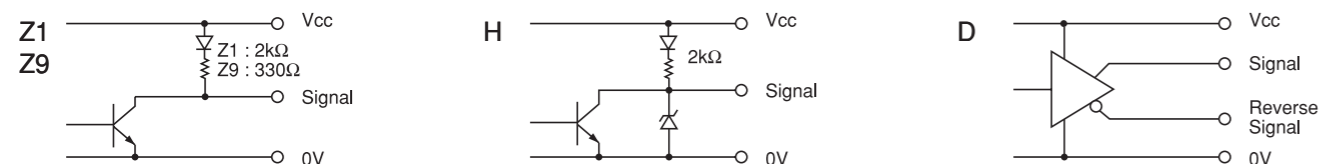


Complying with RoHS
 B : Black Dial *Silver Dial for Special Order.
 Z1 : Voltage Output (NPN Tr.) [Internal Resistance 2kΩ]
 Z9: Voltage Output (NPN Tr.) [Internal Resistance 330Ω FANUC Spec.]
 H: Voltage Output (NPN Tr.) [MELDAS SPEC.]*Only for 25P/R
 D: Line Driver Output

External Dimension



Output Circuit



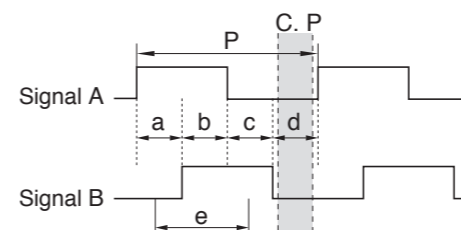
Electrical Spec

TYPE	Z1	Z9	H	D
Power Supply(Vcc)	DC+4.5V~+13.2V	DC+5V±10%	DC+12V±10%	DC+5V±5%
Current Consumption	50 mA Max	70 mA Max	50 mA Max	100 mA Max
Resolution	100P/R · 25P/R		25P/R	100P/R · 25P/R
Output Voltage	"H"	Vcc-1V Min	+5V±10%	2.5 V Min
	"L" ※1	0.5 V Max		
Maximum Frequency Response	5 kHz			
Rise & Fall Time	1 μs Max		1.5 μs Max	200 ns Max
Maximum Sink Current	20 mA Max			

※1) at Maximum Sink Current

Wave Form

2Z1 · 2Z9 · 2H

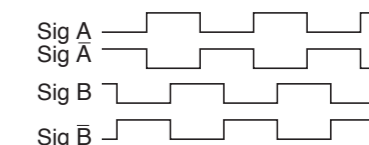


$$P = \frac{1}{\text{Resolution}}$$

$$a, b, c, d = \frac{P}{4} \pm \frac{P}{6}$$

Wave Ratio (Duty); 50 ± 25 (%)

2D

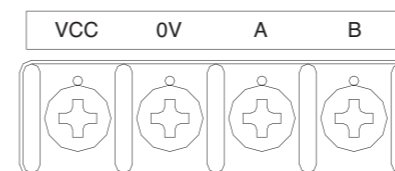


C.P=Click points

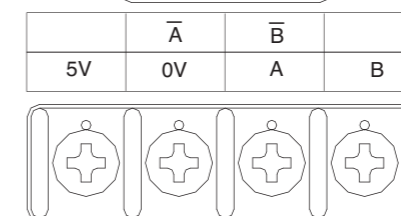
For mode 25P/R click point is at each position of a,b,c,d.
 ※Point "e" is recommended as the system switching timing.

Electrical Connections

2Z1 · 2Z9 · 2H



2D



Mechanical Spec

Starting Torque	6.8×10 ⁻³ N·m~2.9×10 ⁻² N·m
Shaft Loading	Thrust 9.8N
	Radial 19.6N
Maximum Permissible Speed	600min ⁻¹ (Instantaneous) 200min ⁻¹ (Continuous)
Rotational Life	> 1 million rotations (200min ⁻¹)
Net Weight	200g Max

Environmental Spec

Operating Temperature	-10°C~+60°C
Storage Temperature	-30°C~+70°C
Humidity	RH 85% Max No Condensation
Vibration	10~55 Hz / 1.5mm X,Y,Z Each 2h
Shock	490m/s ² ,11ms X, Y, Z Each 3 times
Ingress Protection	IP64(Panel Mounting)